



"WITTY, INVENTIVE ENCHANTMENT...THE MOST
INNOVATIVE, BEST NEW MUSICAL SINCE 'HAMILTON!'"
-THE NEW YORK TIMES

NATASHA, PIERRE AND THE GREAT COMET OF 1812

BOOK, MUSIC, & LYRICS BY **DAVE MALLOY**



OCT 20-NOV 26, 2023 • PRESS OPENING: OCT 27

    @horizontheatre #htcGreatComet

404.584.7450 · horizontheatre.com

2023
SEASON
SPONSORS



Major funding is provided by the City of Atlanta Mayor's Office of Cultural Affairs and the Fulton County Board of Commissioners. This program is supported in part by the Georgia Council for the Arts through the appropriations of the Georgia General Assembly. GCA also receives support from its partner agency - the National Endowment for the Arts.

WELCOME TO HORIZON

AWARD-WINNING PLAYS
STUNNING NEW VOICES

STORIES BY TODAY'S WRITERS, UP CLOSE AND PERSONAL

Welcome...to Atlanta's home for intimate, smart, positive contemporary theatre. Outstanding plays from around the world, never before seen in Atlanta. Plays by today's writers — performed by Atlanta's best professional actors, created by award-winning Atlanta directors and designers. Stories that are relevant to your life...provocative and fresh stories of positive change — all up close and personal.



At Horizon, we seek to bring you new plays that connect us to each other, our communities and the world; stories that make us laugh, cry and think. Whether funny or provocative, inspiring or challenging, suspenseful or celebratory, the plays bring us together with fresh perspectives on ourselves and our world. And in our intimate space, the audience and actors are part of a unique shared experience that we hope lifts you or fills you in a way that you can't quite do with your screen at home.

You are our intelligent, generous and adventurous audiences, who make Horizon possible. It's an audacious act—supporting high quality, intimate theatre for our community by artists who live and work here. By “buying local”, you support jobs here in Atlanta for artists, administrators and technicians—people who contribute to our community on and off stage. **Whether you are in the audience today**



for the first time or for the one hundredth, we thank you for choosing to spend a few precious hours with us in our artistic home. If you're lifted, tell a few people about it. And come back and see us again!



**—LISA AND JEFF ADLER,
Co-Founders and Co-
Artistic Directors**

Pictured (from top): Enoch King and Cynthia D. Barker in *THE LIGHT* • The cast of *DESIGNING WOMEN 2020: THE BIG SPLIT* • Brandon Partrick and Rhyn McLemore in *ROE* • Jay Jones and Chantal Maurice in *SQUARE BLUES*



We welcome your feedback, volunteer assistance, or contributions.

Horizon Theatre Company, PO Box 5376, Atlanta, GA 31107
Administrative Office: 404.523.1477 • Box Office: 404.584.7450
horizontheatre.com • info@horizontheatre.com

**NATASHA, PIERRE AND THE
GREAT COMET OF 1812**
BY **DAVE MALLOY**

Directed by **HEIDI McKERLEY**
Music Directed & Conducted by **HOLT McCARLEY**
Choreographed by **HEIDI McKERLEY & JEFF McKERLEY**
Assistant Director **JEFF McKERLEY**
Co-Artistic/Producing Director **LISA ADLER**

Scenic Design
ISABEL CURLEY-CLAY
MORIAH CURLEY-CLAY

Lighting Designer
MARY PARKER

Costume Designer
DR. L. NYROBI N. MOSS

Sound Designer/Audio Engineer
TYEHIMBA SHABAZZ

Props Master
LEAH THOMAS

Stage Manager
BRITTANY K. GILES-JONES*

Asst. Stage Manager
JACKIE LENZ

Natasha.....**ALEXANDRIA JOY***
Pierre.....**DANIEL BURNS**
Hélène.....**JANINE AYN**
Balaga.....**SKYLER BROWN**
Marya.....**TERRY BURRELL***
Sonya.....**ANNA DVORAK**
Mary.....**KENDRA JOHNSON**
Prince Bolkonsky.....**JEFF McKERLEY***
Anatole.....**JORDAN PATRICK**
Andrey.....**HAYDEN ROWE**
Dolokhov.....**TERRENCE J. SMITH**
Keyboard.....**HOLT McCARLEY**
Asst. to the Music Director and Casting.....**ASHLEY PRINCE**
Ensemble/Musicians.....**ALYSSA EASTERLY** (*guitar, piano, understudy Hélène & Marya*),
MIRO GOMEZ (*cello, u/s Andrey, Prince, Balaga*), **RUTH MEHARI** (*cello, bass*),
ERIC NABETH (*accordion, piano, u/s Balaga, Pierre*)
Apprentices/Ensemble/Musicians.....**EDEN MEW** (*percussion, u/s Sonya*),
MARISSA ROMANOFF (*viola*), **MOLLY ANN TUCKER** (*clarinet, u/s Sonya, Mary*)
Additional Understudies.....**JANINE AYN** (*Mary*), **SKYLER BROWN** (*Dolokhov*),
ANNA DVORAK (*Natasha*), **JILL HAMES** (*Marya*), **KENDRA JOHNSON** (*Sonya, Hélène*),
TERRENCE J. SMITH (*The Prince*), **HAYDEN ROWE** (*Anatole*)

**Members of Actors' Equity Association*

Time & Place: Various locations in 19th century Russia

NATASHA, PIERRE AND THE GREAT COMET OF 1812 is presented by arrangement with Concord Theatricals. www.concordtheatricals.com

Broadway premiere presented by Howard & Janet Kagan. Paula Marie Black, Carole Shorenstein Hays, Jenny Steingart and Jason Eagan, Mary Lu Roffe and Susan Gallin, Diana DiMenna, Mary Maggio/Sharon Azrieli/Robin Gorman, Darren Sussman/Roman Gombour/Lav Gelfer, Tom Smedes, John Logan, Lisa Matlin, Margie and Bryan Weingarten, Daveed Frazier, Argyle Productions/Jim Kierstead, In Fine Company Hipzee, Cut-terman & Caiola/Backdrop Partners, Siderow Kirchman Productions/Sunnyspot Productions, Gordon/Meli Theatricals, Rodger Hess/Larry Toppall, Daniel Rakowski/Matt Ross/Ben Feldman, Mike Karns, The American Repertory Theatre (Diane Paulus, Artistic Director; Diane Quinn, Executive Producer; Diane Borger, Producer), and Ars Nova.

Originally commissioned, developed, and world premiere produced by Ars Nova; Jason Eagan, Founding Artistic Director; Renee Blinkwolt, Managing Director.

Further developed and produced by the American Repertory Theater at Harvard University; Diane Paulus, Artistic Director; Diane Quinn, Executive Producer; Diane Borger, Producer.

This musical is 2 1/2 hours including a 15-minute intermission.

The videotaping or making of electronic or other audio and/or visual recordings of this production and distributing recordings or streams in any medium, including the internet, is strictly prohibited, a violation of the author(s)'s rights and actionable under United States copyright law. For more information, please visit <https://concordtheatricals.com/resources/protecting-artists>

HORIZON THEATRE COMPANY STAFF

Co-Artistic/Producing Director.....	LISA ADLER
Co-Artistic/Technical Director.....	JEFF ADLER
Associate Artistic Producer/Business Manager.....	MARGUERITE HANNAH
Assistant Managing Director.....	LaWANDA GREEN
Assistant Producer.....	NORA FRANKOVICH
Associate Technical Director.....	DANIEL FRIDAY
Education and Digital Content Coordinator.....	JACK PADGETT
Graphic Designer.....	DARYL LISA FAZIO
Front of House Manager and <i>Madeline's Christmas</i> Coordinator.....	MEGAN PARKER
Box Office and House Management Staff.....	MATT MERCURIO, KENISHA MORGAN, MEGAN PARKER, ROSE LANGLEY, SUSY RESENDIZ, MALAIKA RICKS, TWANS RUCKER, JANELL PERRY, GIO TORTORICI, ISABEL A. CURLEY-CLAY & MORIAH CURLEY-CLAY
Resident Set Designers.....	MARY PARKER
Resident Lighting Designer.....	THOMAS W. JONES II, HEIDI McKERLEY
Artistic Associates.....	SUEHYLA EL-ATTAR
Commissioned Playwright/Young Playwrights In-School Teaching Artist.....	MARGUERITE HANNAH, LaWANDA GREEN
<i>Black Women Speak</i> Staff.....	CANDRICE JONES, ARIDY NOX
<i>Black Women Speak</i> Commissioned Playwrights.....	A'NDREA J. WILSON, SHAY YOUNGBLOOD, TRAMAIN BRATHWAITE, AMINA MCINTYRE CHIWUZO IFE OKWUMABUA, KELUNDRA SMITH, DANA L. STRINGER
Educational Partner.....	SPRING MASON & THE ATLANTA CHILDREN'S THEATRE COMPANY
Partner High School.....	THE NEW SCHOOL
IT Czar.....	MARCUS RILEY
Videographer.....	GLENN SPIVEY
Photographer.....	SHANNEL RESTO
Public Relations.....	BRIANNA POPLASKIE—BRAVE PUBLIC RELATIONS

• SEE OUR WEBSITE FOR STAFF BIOS •

PRODUCTION STAFF

Set Construction Leads.....	JEFF ADLER, DANIEL FRIDAY
Set Construction Crew.....	JAMES KNIGHT, ERIC BIVINGS, BEN DELLHEIM, BILL LITTLE
Set Construction Assistance.....	DANI DICKINSON, SOPHIA GOLDBERG, ELLIE HAGAN, KALEE ODOM, HANNAH STAPLETON, BILL YANG
Scenic Charge.....	KARLEY SANDERS
Scenic Painters.....	KARLEY SANDERS, SOPHIA GOLDBERG, ELLIE HAGAN, KAT DENZELL
Costume Design Assistant.....	CARRIE GIGLIO
Master Electrician.....	KEVIN POWERS
Asst. Master Electrician.....	EDWIN HUERTAS
Electricians.....	HANNAH BEAMON, RAKESH DESAI, ELEAZAR GUAJARDO, NATHANIEL HILL, KATRINA STEWARD, ADAM DONER, KEVIN MATZ, AMANDA AKINS
Fight Choreographer/Intimacy Coordinator.....	DAVID STERRIT
Asst. Stage Manager & Light/Sound Operator.....	DANIELA RAMOS VAHALETA
Sound Consultant.....	MULTIBAND STUDIOS, CHRIS LANE
Audio Assistance.....	RASHAAD PIERRE, AMARI HICKS
Stage Crew Alternates.....	CARO KOK, LEAH THOMAS

BOARD OF DIRECTORS

LISA ADLER, *President, Horizon Theatre Company*
JEFF ADLER, *Vice-President, Horizon Theatre Company*

TINA ARBES, *Retired, Public Broadcasting Atlanta*
W. IMARA CANADY, *AIDS Healthcare Foundation*
BRUCE H. GAYNES, *Retired Attorney*

MICHAEL ROBINOWITZ, *Physician*
LYNNE SEGALL, *Goizueta Business School,
Emory University*

RESOURCE COUNCIL

Charles & Ginny Brewer
Robert F. Bryan, Jr.
Tom Carter
Mary Anne Chew
Ann Cramer
Russell Currey
Christopher Edmonds
Barbara Foston
Carole Galanty
Joe & Shelley Hammell

Kathy Harber
Linda Hubert
Baxter Jones
Barbara Kruger
Jessica R. Linden
Bill Little
Kristie Madara
Kerry McArdle
Lou McBryan
Jeff Mielcarz
Pam Moye

Rev. Jill A. Oglesby-Evans
Margie Osheroff
Elena Polovnikova
L. Paul Pendergrass
Scott Pyron
Marcus Riley
Jack Sawyer
Alan Schreihofner
Stan Segal
Jackie Sherman
David Skoke

John & Karen Spiegel
Lever Stewart
Sallie Weddell
Phyllis Weiss
Pat Westrick
Susan & Lee Winton
Jeff Woodward
Bill Yang
Amy Zeldin

ACT 1

1. "Prologue" - *Pierre, Natasha, Sonya, Marya D., Anatole, Hélène, Dolokhov, Bolkonsky, Mary, Balaga and Ensemble*
2. "Pierre" - *Pierre and Ensemble*
3. "Moscow" - *Natasha, Marya D. and Sonya*
4. "The Private and Intimate Life of the House" - *Bolkonsky, Mary and Natasha*
5. "Natasha & Bolkonskys" - *Servant, Mary, Natasha and Bolkonsky*
6. "No One Else" - *Natasha*
- 7.1 "The Opera (Part 1)" - *Marya D., Servant, Sonya, Hélène, Pierre & Ensemble*
- 7.2 "The Opera (Part 2)" - *Opera Soloists, Natasha, Sonya and Ensemble*
- 7.3 "The Opera (Part 3)" - *Natasha, Sonya, Hélène, Opera Soloists and Ensemble*
8. "Natasha & Anatole" - *Natasha and Anatole*
9. "The Duel" - *Anatole, Pierre, Dolokhov, Hélène, Servant and Ensemble*
10. "Dust and Ashes" - *Pierre and Ensemble*
11. "Sunday Morning" - *Sonya, Natasha and Marya D.*
12. "Charming" - *Hélène and Natasha*
13. "The Ball" - *Anatole and Natasha*

ACT 2

14. "Letters" - *Mary, Natasha, Anatole, Dolokhov, Pierre and Chorus*
15. "Sonya & Natasha" - *Natasha and Sonya*
16. "Sonya Alone" - *Sonya*
17. "Preparations" - *Pierre, Anatole and Dolokhov*
18. "Balaga" - *Balaga, Anatole, Dolokhov and Ensemble*
19. "The Abduction" - *Anatole, Pierre, Dolokhov, Mayservant and Ensemble*
20. "In My House" - *Marya D., Sonya and Natasha*
21. "A Call to Pierre" - *Marya, Pierre, Servant and Ensemble*
22. "Find Anatole" - *Pierre, Anatole, Hélène, Natasha, Servant and Ensemble*
23. "Pierre & Anatole" - *Pierre and Anatole*
24. "Natasha Very Ill" - *Sonya*
25. "Pierre & Andrey" - *Sonya, Andrey and Pierre*
26. "Pierre & Natasha" - *Pierre and Natasha*
27. "The Great Comet of 1812" - *Pierre and Company*



Accordionology

SALES • SERVICE • RENTAL
 CONTACT US TO ARRANGE A VISIT!

404.919.5419
 Decatur, GA
accordionology.com



NAGEL
 LAW FIRM

844-GA-WRECK
gawreck.com

THE GREAT COMET CHARACTERS & FAMILY TREE

AS QUOTED
FROM THE
OPENING
SONG

There's a war going on out there somewhere, and **ANDREY** isn't here.

NATASHA is young; she loves Andre with all her heart.

SONYA is good; Natasha's cousin and closest friend.

MARYA is oldschool; a grande dame of Moscow. Natasha's Godmother, strict yet kind.

ANATOLE is hot; he spends his money on women and wine.

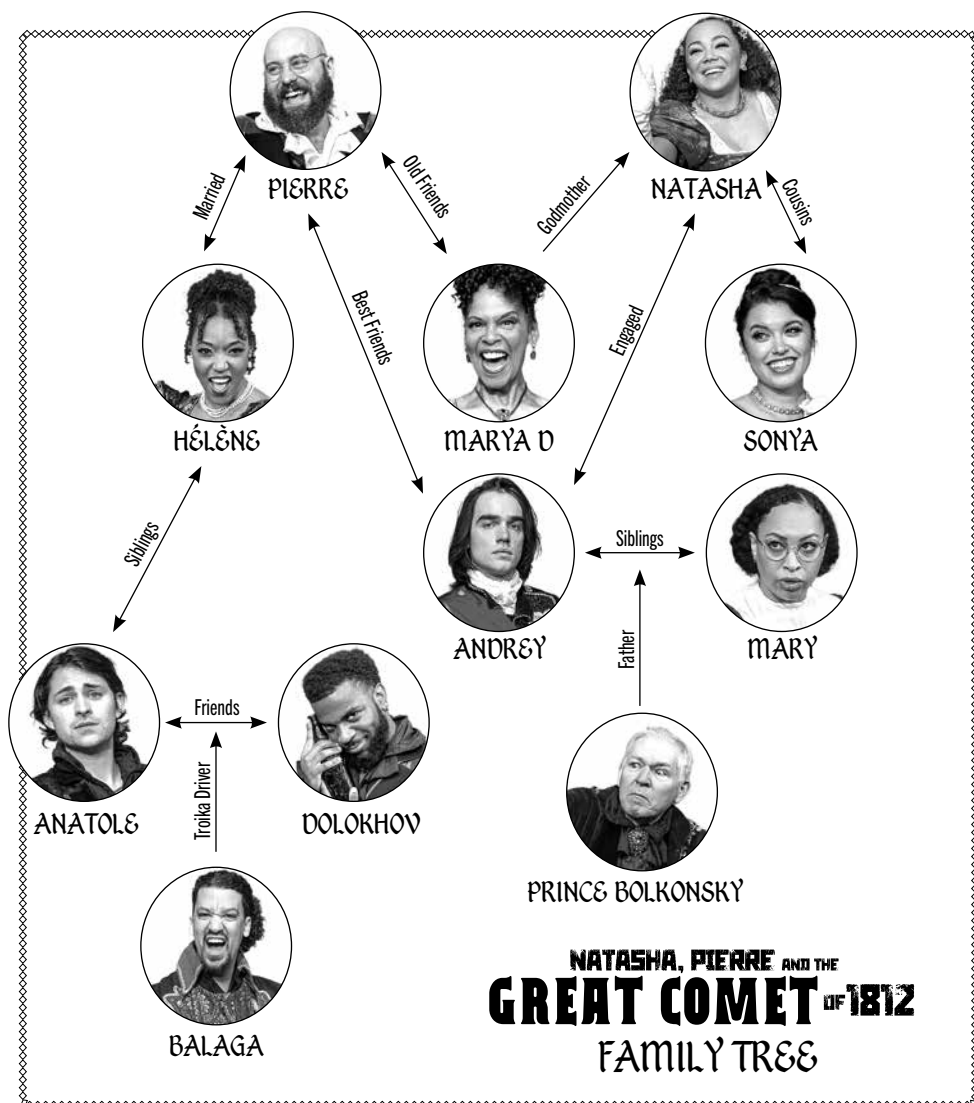
HÉLÈNE is a slut; Anatole's sister, married to Pierre.

DOLOKHOV is fierce (but not too important). Anatole's friend, a crazy good shot.

OLD PRINCE BOLKONSKY is is crazy, and **MARY** is plain; Andrey's family - totally messed up.

BALAGA is just for fun.

And what about **PIERRE**? Dear, bewildered, and awkward **PIERRE**?



DAVE MALLOY is a composer, writer, performer, and orchestrator. He is the winner of three Obie Awards, a Smithsonian Ingenuity Award, a Drama Desk Award, a Lortel Award, the Richard Rodgers Award, an ASCAP New Horizons Award, and a Jonathan Larson Grant. His shows include *Moby-Dick*, *Octet*, *Preludes*, *Ghost Quartet*, *Natasha, Pierre & The Great Comet of 1812*, *Little Bunny Foo*

Foo, *Black Wizard/Blue Wizard*, *All Hands*, *Three Pianos*, *Beardo*, *Beowulf - A Thousand Years of Baggage*, *The Sewers*, *Sandwich*, *Clown Bible*, and *(The 99-cent) Miss Saigon*. His electropop opera *Natasha, Pierre & The Great Comet of 1812*, which opened on Broadway in 2016, received 12 Tony nominations including Best Musical, Best Score, Best Book, and Best Orchestrations.

ABOUT THE **CAST**

JANINE AYN (Hélène) Atlanta: *The Secret Garden*, *Sunday in the Park with George*, *Once on This Island*, *Nine* (Jennie T. Anderson), *The Sound of Music* (CSTC). Regional: *Songs for a New World* (Off-Broadway), *Ragtime* (APAC), *Leader of the Pack* (Super Summer Theatre), *Thoroughly Modern Millie* (Forestburgh Playhouse). www.janineayn.com. Love and Light!



SKYLER BROWN (Balaga) is an Atlanta based actor, singer, and musician who was previously seen on Horizon's stage in *Once, the Musical* and most recently seen in *The Play That Goes Wrong* (Aurora Theatre). Other Atlanta credits include *Assassins* (Jennie T Anderson), *Urinetown* (Actor's Express/Oglethorpe), *The Addams Family* (Atlanta Lyric Theatre), and *The Pretty Pants Bandit* (Georgia Ensemble Theatre). Skyler also tours the southeast with his band My Brother Skyler, singing and playing guitar. All love goes to his parents for their relentless support. And thank YOU for supporting live theatre!! @skyler_is_brown

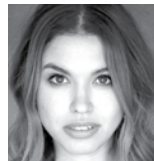


DANIEL BURNS (Pierre) was previously seen at Horizon as Billy in *Once*. Other Atlanta shows include *The Secret Garden* (Jennie T Anderson), *Heathers*, *Company*, *Sweeney Todd* (Actors Express) *Buddy: The Buddy Holly Story*, *Bright Star*, *Newsies*, *Smoke on the Mountain*, *Millon Dollar Quartet*, *Sanders Family Christmas*, *Ring of Fire*, *Keep on the Sunny Side*, *Tarzan* (The Legacy Theatre), *Ragtime*, *Shenandoah*, *Titanic*, *Carousel*, and *Man of Lamancha* (Serenbe Playhouse), *Jesus Christ Superstar*, *Ragtime*

(Atlanta Lyric Theatre), *The Mystery of Edwin Drood*, *Godspell* (Stage Door Players).



TERRY BURRELL* (Marya) is thrilled to be back at Horizon Theatre. She was last seen here in *'Da Kink in My Hair*. Broadway: *Thoroughly Modern Millie*, *The Three Penny Opera*, *Swinging On A Star*, *Into The Woods*, *Honky Tonk Nights*, *Dreamgirls*, *Just So Stories* and *Eubie*. Off Broadway: *Almost Heaven*, *And The World Goes Round*. Some regional credits: *Rock Of Ages*, *Showboat*, *Man Of La Mancha*, *Crowns*, *Hospice/Pointing At The Moon*, *Angry Raucous And Shamelessly Gorgeous*, *Thunder Knocking At The Door*, *Candide*, *A Christmas Carol*, *Cinderella* (Rodgers+Hammerstein), *Brownie Points*, *Cinderella and Fella*, *Lady Day At Emerson's Bar And Grill*, *Crowns*, *Oklahoma*, *Ever After*, *Shutter Sisters*. *ETHEL*, a one-woman show written and performed by Terry played to sold out houses at Walnut Street Theatre, Alabama Shakespeare Festival, and most recently The Alliance Theatre.



ANNA DVORAK (Sonya) is thrilled to be making her Horizon debut with *Great Comet*. She was most recently seen as Judy Denmark in *Ruthless* at Out Front Theatre Company. Other notable credits include Marie Baker in *The Pretty Pants Bandit* (Georgia Ensemble), Kira/Clio in *Xanadu* (Out Front Theatre Company), The Caterpillar in *Wonderland* (Synchronicity), Lulu in *Between Riverside and Crazy* (True Colors Theatre Company). Anna holds a BFA in Musical Theatre from the University of Florida and (by day) is an Atlanta music and arts educator. Thank you for supporting local live theatre. We're so happy you're here.



Actors' Equity Association, founded in 1913 is a 39,000 member association of professional actors and stage managers nationwide on and off Broadway, in regional, stock, and dinner theatre. These actors and stage managers are committed to working in the theatre as a profession, not avocation, and bring you the finest professional training and experience. By presenting Equity productions, this theatre offers you, our audience, the finest quality actors and stage managers that your admission dollars can buy.

ABOUT THE CAST



KENDRA JOHNSON (Mary)

is an Atlanta-based singer, actor, dancer, choreographer, and TV/Film/Commercial actor. A Birmingham, AL native, she has a BFA from the University of Montevallo. Regional: Radio

in *Caroline Or Change*, Andrea in *Once On This Island* in Concert, Rose in *The Secret Garden*, Isle in *Spring Awakening* (Jennie T. Anderson Theatre), and Nyasha in *Mufaro's Beautiful Daughters* (Synchronicity Theatre). Following u/s Agnes in *The House That Will Not Stand*, Kendra is very honored to be stepping on the Horizon stage for the second time as Mary. She is represented by The Avenue Agency. Feel free to follow her on all social media platforms.



ALEXANDRIA JOY* (Natasha)

is an ATL native and is thrilled to be making her Horizon debut. Regional: *The Incredible Book Eating Boy*, *The Boy Who Kissed The Sky*, *Beautiful Blackbird LIVE!*, *Naked Mole Rat Gets*

Dressed: The Rock Experience (Alliance Theatre), *Beautiful: The Carole King Musical* (Aurora Theatre), *Mother of God: A New Musical* by Christian Magby and Christian Albright, *Heathers: The Musical* (Actors Express), *Spring Awakening*, *HAIR*, *Ragtime* (Serenbe Playhouse), *Ella Enchanted* (Synchronicity Theatre), *Jekyll and Hyde* (Atlanta Lyric Theatre). TV/Film: *Lovecraft Country*. 2018-2019 Apprenticeship Company (Serenbe Playhouse). Education: BFA at Valdosta State University. IG: @missalliejoy



JEFF MCKERLEY* (Prince Bolksky/Co-Choreographer/Asst. Director)

Horizon Theatre: *Roe* (u/s, performed); *Freaky Friday*; *Avenue Q*; *I Love You, You're Perfect, Now Change*; *Easy: The Play*; and *Water Cool-*

ers: An Office Musical. Atlanta: Anderson Theatre Cabaret Series, Actor's Express, Alliance Theatre, Theatrical Outfit, Shakespeare Tavern, Aurora Theatre, Atlanta Lyric Theatre, Georgia Ensemble Theatre. Regional: LaGrange Lyric Theatre, Gainesville Theatre Alliance. Other: Local Atlanta Award for Outstanding Actor in a Musical (*Cabaret*, 2007); Outstanding Choreography (*Cabaret*,

2007); Outstanding Featured Actor in a Play (*The Legend of Georgia McBride*, 2017). Love to Heidi... you make me better! XOXO



JORDAN PATRICK (Anatole)

is so excited to be joining Horizon Theatre for the first time! A native of Wisconsin, he moved to Georgia in 2017 and has been performing ever since: *Beautiful*, *Summer* (Aurora Theatre), *Spring Awakening*, *Assassins* (Jennie T. Anderson) *The Miraculous Journey of Edward Tulane* (Synchronicity Theater), *Heathers* (Actors Express), *Pretty Pants Bandit* (Georgia Ensemble Theatre), *Goodnight Tyler* (Alliance Theater), *Titanic* (Serenbe Playhouse). International: *Life Love and Other Nonsense* (Touring Eastern China), Improviser (Seoul City Improv in South Korea), *Breath of Stars* (Crisis Art Festival in Arezzo, Italy). TV/Film Credits: *Candy* (Hulu), *The First Lady* (SHOW-TIME), *Teenage Bounty Hunter* (Netflix), *The Resident* (FOX), and *Creepshow*.



HAYDEN ROWE (Andrey)

is so excited to be back at Horizon Theatre! He was last seen on the Horizon Stage playing violin in *Once*. Other Atlanta credits include *Bullets Over Broadway* (GET), *Jekyll and Hyde*, *Tarzan*, *The Wedding Singer*, and *Jesus Christ Superstar* (Atlanta Lyric). He attended Kennesaw State University for Theatre and Performance Studies. When not onstage, you can catch Hayden in town as a drag queen by the name of "Siberia"! He hopes you enjoy your time in Moscow with us!



TERRENCE J. SMITH (Dolokhov)

is extremely excited to be making his Horizon debut! You can catch Terrence in the upcoming movie musical *The Color Purple* as Adam. You can also catch him in the

2021 blockbuster movie *The Tomorrow War* (Sam), *The Wonder Years* reboot (Allen), the web series *Westwood: The Blood* (Roscoe) and *Ozark S3* (Highroller #1). Some of his theatre credits include *HAIR* (Hud), *White Christmas* (Ralph Sheldrake), *Mother of God* (Damari), *Titanic* (Edgar Beane), *Mystery of Love and Sex* (Johnny), and *The Little Mermaid* (Grimsby). IG: @terrythevikingr

SPECIAL THANKS

DAR STARIKOVA for the samovar; **ELENA POLOVNIKOVA**, **JUDY THOMAS**, **SERA THOMAS**, **CAROLINE MITCHELL**, and **SAM LEVY** for props assistance; **CHRIS BAUM** for sponsorship assistance; **BILL LITTLE** for designing and welding our railings; **JEFF WOODWARD** for legal counsel; **GEORGIA ENSEMBLE THEATRE** for loan of props; **AURORA THEATRE** and **THEATER EMORY** for loan of costumes; **ACCORDIONOLOGY** for loan of the red accordion; and **ALL OF OUR MUSICIANS** for their own musical instruments.

MEET THE **ENSEMBLE**



ALYSSA EASTERLY

(guitar, piano
understudy *Hélène*,
Marya)



MIRO GOMEZ

(cello,
understudy *Andrey*,
Prince, *Balaga*)



RUTH MEHARI

(cello, bass)



ERIC NABETH

(accordion, piano,
understudy
Balaga, *Pierre*)



EDEN MEW

(percussion,
understudy
Sonya)



MARISSA ROMANOFF

(viola)



MOLLY ANN TUCKER

(clarinet,
understudy *Mary*, *Sonya*)



**ENSEMBLE
BIOS**

ABOUT THE PRODUCTION

Welcome to a mesmerizing world of passion, love and intrigue in *Natasha, Pierre and the Great Comet of 1812*! This Tony Award-winning musical, inspired by a scandalous slice of Tolstoy's *War & Peace*, is a theatrical experience like no other, bringing you just inches from the brash young lovers as they light up Moscow in a "heaven-sent fireball" (*NY Times*).

You can see that we have transformed our space into a multi-level supper club with an onstage bar, a few choice tables and a balcony area with cozy couches and chairs in addition to regular theatre seating. The cast performs on every level, right next to audience members. You are transported to the glamorous land of chandeliers and vodka in the salons and opera houses of 19th century Moscow— where passions ignite. Mixing pop, soul, folk and electronic dance music with classic Broadway, this innovative musical brings to life the heart of this epic tale of love and fate.

"*Natasha, Pierre and the Great Comet of 1812* is a unique, electric and immersive experience," says director and Horizon Artistic Associate Heidi McKerley. **"You'll be up close to life-changing love affairs, souls turned inside out, existential crises, and high-stakes risks.** Napoleon Bonaparte is on his way, and so is the incomparable Great Comet. The musical's fusion of classic ideas framed within a contemporary lens reminds us that some human truths are universal no matter the time or place. We have an outstanding cast of multitalented artists—all Atlanta-based theatre professionals—who are also the show's musicians, playing cello, violin, bass, accordion, clarinet, piano, guitar and more. **We are taking advantage of everything that is wonderful about live theatre in bringing this award-winning musical to the intimate Horizon space. You can't get what we are offering here on any screen you own!"**

Thank you for joining us! Please share your experience and spread the word!

ABOUT THE CREATIVE TEAM

HEIDI MCKERLEY (*Director & Co-Choreographer*) is a Horizon Artistic Associate where she has directed 35 projects over 25 years, including the musicals *Once*, *Cowgirls* and many more. She has been fortunate to work with most other professional theatres in Atlanta during her thirty-four years of living here, including the Alliance, City Springs, the Jennie T. Anderson Concert Series, Georgia Shakespeare, Atlanta Shakespeare, Aurora, Theatrical Outfit, Georgia Ensemble, Actor's Express, and Atlanta Lyric, and has been a guest artist for the Gainesville Theatre Alliance, Berry College, Kennesaw State University, and the University of Georgia. Heidi has been nominated for 14 Suzi Bass Awards and won for Best Director of a Musical in 2011 for *Avenue Q*. She was just nominated for Best Director of a Play for *The Play That Goes Wrong* at the Aurora Theatre and that show along with the Horizon's *Designing Women 2020*, which she also directed last season, have been nominated for 13 awards between them. Regionally, Heidi has worked for the Walnut Street Theatre in Philadelphia and the Oasis Theatre and the Hippodrome State Theatre in Florida. Heidi is a member of the National Storytelling Network, the Alliance for Theatre in Education, Georgia Thespians, the Georgia Theatre Conference, and the Educational Theatre Association of America. Big love and gratitude to Jeffrey and my family xoxo!

HOLT MCCARLEY (*Music Director*), an Atlanta-based music director, pianist, and composer, is excited to be making his Horizon debut! Previous Atlanta credits: *Spring Awakening*, *Next to Normal*, *Assassins*, *The Secret Garden* and Lippa's *The Wild Party* (Jennie T. Anderson), *All Shook Up* (City Springs), *Peter and the Starcatcher* (Stage Door), and *Company* (Kennesaw State). Upcoming: *The Light in the Piazza* at the Jennie. IG: @holtmccarley.mp3

ISABEL CURLEY-CLAY & MORIAH CURLEY-CLAY (*Scenic Designers*) are thrilled to be back creating live theatre at Horizon. As resident scenic designers at Horizon, they have designed all of Horizon's sets for the last decade. Some favorite past Horizon designs: *Designing Women 2020* (2023 Suzi Bass Award Nomination), *The Light* (Suzi Award 2022), *Every Brilliant Thing*, *Once*, *Time Stands Still*, *The Curious Incident of the Dog in the Nighttime*, *Constellations*, and *Cowgirls*. Other recent designs include *Hands Up*, *7 Testaments* - Alliance Theatre, *Reparations* (AUDELCO Award Best Scenic Design, 2019-2020) - Billie Holiday Theatre, *America in One Room*, *My Lord What a Night*, and *The Buddy Holly Story* - Florida Studio Theatre, *Downstairs*, *Hometown Boy* - Actor's Express and *Native Gardens* - Aurora Theatre. Moriah and Isabel are the recipient of multiple Suzi Bass Awards for designs in Atlanta. In addition to

designing scenery in the Atlanta area and in regional theatre around the country, Isabel and Moriah teach scenography at Spelman College. axisstudiosdesign.com

DR. L. NYROBI N. MOSS (*Costume Designer*) is an award-winning costume designer with more than 30 years of experience in theatre and entertainment. Nyrobi's costume design work has appeared in theatres regionally and nationally across Atlanta, DC, Orlando, New York, Virginia, Las Vegas, and Dallas and internationally in Holland, West Africa, South Africa, and Dubai. Previous Horizon productions include *The House That Will Not Stand*, *Support Group for Men*, *Square Blues*, *The Light*, *Sweet Water Taste*, *Da Kink in My Hair*, *RIGHT ON!*, and *The Bluest Eye*. Nyrobi won Suzi Bass awards for Outstanding Costume Design for *Shakin' the Mess Outta Misery* and Synchronicity Theatre's *Eclipsed*. Nominations include Outstanding Costume Design in a Musical for Horizon's *Blackberry Daze*; Theatrical Outfit's *Five Guys Named Moe*, and Actors' Express' *The Color Purple*, and Outstanding Design Team TYA for Synchronicity Theatre's *Bob Marley's Three Little Birds*. Nyrobi serves as the Co-Vice Chair on the Board of Directors of 7 Stages Theatre. She is also a Certified Relationship Specialist, and Business Consultant for non-profit organizations, entrepreneurs, artists, start-ups, and small businesses. FB: iamdrnyrobi • IG: goddesscomplexcostumes • IG: drnyrobi

MARY PARKER (*Lighting Designer*) is over the moon to return as resident lighting designer at Horizon. This year marks the 15th year Mary has called Atlanta home. She is very proud to have had the pleasure of designing for almost every professional theatre company in town, as well as several regional theatres throughout the Southeast. Some favorites include *Fannie* with City Theatre of Pittsburgh, Actors Theatre of Louisville and True Colors Theatre, *Leopard's Tale* and *Sanctity for Reframing the Narrative* at The Kennedy Center, *Book of Will* and *The Royale* at Theatrical Outfit, and *The Great Gatsby* at Georgia Ensemble Theatre. She is also production manager for Ballethnic Dance Company. Mary is super grateful to be nominated for and have won several awards over the years.

TYEHIMBA SHABAZZ (*Sound Designer/Audio Engineer*) is a proud Atlanta native as well as a sound designer, composer, and mixing engineer who recently created sound design for Horizon's *The House That Will Not Stand*. He earned his B.A. in Game Design at Georgia State University. His credits include *Jesus Hopped the A Train*, *Prayer for The French Republic*, *Urinetown* (Actor's Express); *Summer: The Donna Summer Musical* (Aurora Theatre); *Mother of God* (Christian Magby); *Caroline, or Change* (Jennie T Anderson The-

atre); *Macbeth* (Theater Emory); *DATA* (Alliance Theatre). The African Company Presents: *Richard III* (University of Rochester). Film/TV/Media: *The Big Latto XR Experience* (Sprite); *Fire x Water* (Aria Brooks); *Twenty-One Pilots Concert Experience* (Roblox); iClone 8 Motion Director (Reallusion); Digital Fashion Toolkit (WildCapture Studios).

LEAH THOMAS (*Props Master*) is an actress, teaching artist, choreographer, and now a props designer! She is elated to be back in her hometown after recently graduating from Emerson College with a BFA in Theatre Education and Performance, and she is excited to be back at Horizon after working on *Rooted* as an Understudy Apprentice. Leah has enjoyed melding her love for theatre with her love for antiques, handiwork, and FaceBook Marketplace. Previous: *Rooted* (U/S Luanne) with Horizon, *The Humans* (U/S Brigid) with Theatrical Outfit, and *And Then They Came for Me...* (Anne Frank/Mutti) with GET. Love and gratitude to the fam, Caroline, and Sammy Bug. IG: @lleahthomass / leahthomas.net

BRITTANY K. GILES-JONES* (*Stage Manager*) is thrilled to return to Horizon after stage managing *Rooted* and co-stage managing *The House That Will Not Stand* and a decade after being a Horizon Theatre apprentice. A current doctoral student at Clark Atlanta University, she

is based in Atlanta, Georgia. Selected production credits: North Carolina Black Rep—*Phenomenal Woman*, *Succession* (NBTF 2022); Passage Theater—*Song For The Disappeared*; Lyric Stage Company of Boston—*Mr. Burns A Post-Electric Play*; New Harmony Theatre—*Aracadia*, *Other Desert Cities*, and *I Love You, You're Perfect, Now Change*; Billie Holiday Theatre: (ASM)—*Brothers From the Bottom*, *Maid's Door* (NBTF 2015). Brittany has completed three tours with Foodplay Productions and a residency at Brave New World Repertory Theatre, where she is the former Chair of the Board of Directors, and a current Advisory Board member. She is also an alumnus of The Juilliard Professional Apprenticeship Program. Proud member of Actor's Equity Association and the Stage Managers Association. IG: @Britt_Kris7

JACKIE LENZ (*Asst. Stage Manager*) has been working as a Stage Manager in Atlanta since 2018 and is thrilled to be making her Horizon debut! She has worked at Aurora Theatre (*Beautiful*, *Mary Poppins*, *Swindlers*, *Goldilocks and the Three Bears*, *The Play That Goes Wrong*), The Atlanta Lyric Theatre (*Jekyll and Hyde*, *The Ad-dams Family*) and the Jennie T. Anderson (*Assassins*, *Next to Normal*, *The Secret Garden*, *The Last Five Years*) and Georgia Ensemble Theatre (*The Pretty Pants Bandit*, *Summer Surf Party*) IG: @jackielenz16



WABE 90.1

CITY LIGHTS

LOIS REITZES • 11A-12P


@LoisReitzes


@wabeatl


@wabeatl


wabe.org

Applause for Horizon Stars

Horizon would like to thank the real STARS OF HORIZON - the individuals, corporations, foundations, and small businesses who have so generously contributed to our 2021 season and special projects (*names are listed from May 1, 2022 through Oct 23, 2023*).

If you have made a contribution, and your name is not listed or listed incorrectly please contact development@horizontheatre.com

BUSINESS, FOUNDATION, AND GOVERNMENT SPONSORS

MAJOR SPONSORS (\$20,000+)

City of Atlanta Mayor's Office
of Cultural Affairs
Fulton County Board of Commissioners
Georgia Council for the Arts
The LuluMa Foundation
The Molly Blank Fund of The Arthur M.
Blank Family Foundation
The Shubert Foundation, Inc.
The Imlay Foundation, Inc.
National Endowment for the Arts

Cinnaholic*
Epps Aviation
Frazier & Deeter Foundation

ARTISANS (\$300-\$499)

Alibaba Turkish and Mediterranean
Delights*
Barcelona Wine Bar*
Fred's Meat & Bread*
The Albert*
Twain's Brewpub & Billiards*

EXECUTIVE PRODUCERS (\$10,000 - \$19,999)

AIDS Healthcare Foundation
Black Leadership AIDS Crisis Coalition
Antinori Foundation
Inman Park Theatre Night
The George M. Brown Trust Fund
Osiason Educational Foundation

PLAYERS (\$200-299)

Actor's Equity Foundation
Bell Street Burritos*
Bar Taco*

FAMILY (up to \$199)

El Bandido*
Flying Biscuit Café-Candler Park*

DIRECTOR'S CIRCLE (\$5,000 - \$9,999)

INVEST Atlanta

MATCHING GIFT COMPANIES

AT&T
Battelle
Coca-Cola Company
Microsoft
SAP

STAR CIRCLE (\$2,000 - \$4,999)

Nagel Law Firm

MEDIA SPONSOR

WABE

**In-Kind Sponsor*

GOVERNMENT SPONSORS



FULTON COUNTY
ARTS & CULTURE

NATIONAL
ENDOWMENT for the ARTS
[arts.gov](https://www.arts.gov)



FOUNDATION SPONSORS



SHUBERT
FOUNDATION INC.



Arthur M. Blank
Family Foundation



MEDIA SPONSOR



Major funding is provided by the City of Atlanta Mayor's Office of Cultural Affairs and the Fulton County Board of Commissioners. This program is supported in part by the Georgia Council for the Arts through appropriations from the Georgia General Assembly. GCA is a Partner Agency of the National Endowment for the Arts.

DIRECTOR'S CIRCLE (\$5,000+)

Bob Davies
 Francine Dykes & Richard Delay
 Van Hall
 Virginia Kriho, In Memory of Ralph &
 Laura Kriho
 Jessica R. Linden
 Cathy Mullins
 Donald & Rosalinda Ratajczak
 Rachel & Larry Schonberger
 Lynne & Eric Segall
 Ramona and Ben White Family Fund
 Sheryl & Robert Winton
 Nancy & Bill Yang

STAR CIRCLE

(\$2,000 - \$4,999)

Anonymous
 Donna Brogan
 Franklin & Dorothy Chandler
 Bryan & Arlene Cohen
 Susan Davidson
 The Rev. Jill Oglesby Evans
 Bruce & Shelley Gaynes
 Roger & Corky Gelder
 Brad Gibson: EAV Village Theater
 Sharon Gridley & Melissa Patrick
 Caroline & Marc Heilweil, in Memory of
 John Ernst
 Linda & Richard Hubert
 Crissey & Pete MacLean
 Kathleen Marran & Ron Peterson
 RoseMarie Mason
 Donald & Helen O'Shea
 Paul Pendergrass & Margaret Baldwin
 Debra & Scott Pyron
 Michael Robinowitz & Denise McLaughlin
 Art Rosser & Robin Hollis
 Saju Samuel
 Alan Schreihofner, In Memory of Cyndy
 Schreihofner
 Judy Shaklee
 Christine Tryba-Cofrin & David H. Cofrin
 Amy & Todd Zeldin

PLAYWRIGHT'S CIRCLE (\$1,000 - \$1,999)

Anonymous (3)
 Jody & Billy Andrade
 Rhona Applebaum & Mark Peabody
 Tina & Jake Arbes
 Cheryl & James Atkins
 Don & Judy Bender
 Joanna Bonsall
 Bob & Dharmattie Brush
 Al & Ruth Caproni
 Harold & Karen Carney
 Candance F Carson
 Lala Cochran & Tom Stinson
 Robert & Angela Cribb

Linda & Gene Davidson
 Betsy Eggers & Jack Honderd
 Audra & Dan Esrey
 Marion Eugeno
 Gail H. Evans
 Carole Galanty & Bill Porter
 Baxter Jones & Jiong Yan
 Donald Jordan
 Howard Katzman & Katie Durham
 Bob Lasnik & Candace Fuqua
 Kristie Madara
 Gloria & Jack McGinnis
 James Milford, in Memory of David Milford
 Nancy Miller & Jackie Sherman, in Memory of
 Nancy Gray
 Jennifer Murkison
 Deedee & Pat Murphy
 Jack Nolen
 Michele L. Pearson
 Bina & Ashok Rao
 Dr. Cecil Reeves
 Sally Rhoden
 Peggy Rogers
 Nancy Rosenblum Tillison
 Jane Saral
 Maggie & Martin Schmidler
 Stan & Georgia Segal
 Joseph Sequeira
 Bernette & Kenneth Sherman
 Dave & Ginny Sjoquist
 Susan Stiefel, in Memory of Alan Stiefel
 Michael Young & Diana Casas
 Leslie Zinn

ANGELS (\$500 - \$999)

Anonymous (3)
 Alice Adler
 Candace Apple & John Rivera
 Cathi Barlow
 Chris, Ashley, & Isla Barnett
 Gail & Dennis Bates
 Doris Billingsley
 Cathy & Bo Bradshaw
 Tom & Sylvia Caron
 Bud Carter & Kay Copilevitz
 James Clayton
 Phyllis Collins
 Billie Jo Corell
 Ann & Jeff Cramer
 Anthony Cupid and Ms. Carolyn Gurney
 Emily Curtin
 Janice & Dave Darling
 Cindy Davis & James Apple
 Sally Ferguson & Jim Tolmach
 Marla Franks & Susan Zollar
 Tom & Donna Fullilove
 Patricia Gagne
 David Garr
 Jackie Goodman, Realtor
 Shelley & Joe Hammell
 Kevin Hendler & Abby Goldsmith
 Sharon Hines
 Tad & Janin Hutcheson
 Stephen & Pamela Kalista
 B.J. Kramer
 Barbara Kruger
 Sandy Linver & Bud Kornman
 Patsy Little

HORIZON STARS ANNUAL FUND CONTRIBUTORS

Wonya Lucas
Walt & Joanne Massey
Marilyn Matlock
Kerry McArdle
Sara June & Michael McDavid
Tom McGowan
Sally Ann Meyer
Simon & Sandra Miller
Jim & Deb Millette
Lauren Morris
Robert J. Mottern & Mari L. Myer
Janice & Tom Munsterman
Network for Good
Nan Grogan Orrcock
Patricia Penn & Michael Milan
Lori Peterson
Gerald Polk & Ronda Fox
Matt & Karen Powell
Frederick & Gretchen Reese
Dr. Nell Rodgers & Charli Vogt
Stan & Cheryl Shapiro
Deborah & Frank Slover
Beth & Edward Sugarman
Marilyn Surbey
Judith & Mark Taylor
Nancy J. Thompson
Louisa Titus
Daniel Triandiflou
Stephen & Phyllis Weiss
Debbie & Steve Wetherhead
Tolly & Jerry Williamson

ARTISANS (\$300 - \$499)

Anonymous
Clarice Belcher
Steven Berman
Kevin & Wendy Best
Rick Bizot & Ute Banse
Jeanie & Bob Blalock
Riki & Paul Bolster
Tony & Joy Borra
Celeste Bottorf
Pam Bruce
Lee Buechele
W. Imara Canady
Dr. Philip Carroll
Fred & Mai Cavalli
Vince & Debbie Collier
Artexas Davis
Pat Del Rey
Bruce & Leigh Douglas
Nita & Rick Epting
Barbara Foston
Brooks Franklin & Lisa Ezzard
Karen Goeckel
Caryn Hanrahan & Andy Siegel
In Memory of Gail Trapnell &
Barbara J. Wilkie
Jennifer & Scott Irvin
Anika Jones
Brendon Kane & Judy Train
Trish Kennedy
Jim Kotaska & Ronnie Spicer
Kathleen & Jeff Lewis
Sue Lind
Betty & Pamela McIntosh
Pamela Meredith
Colleen M. O'Rourke
Barbara Paul
Sophia Brothers Peterman
Judith & Bill Porter
Marian & Milburn Poston
Paul & Mindy Pritchett
Hugh & Ann Rawn
Marie & Rob Rhodes

Carol A. Sandiford
Candace Schey
Charles Schooler
Marianne Skeen, In Memory of
Jim Skeen
Bert & Karen Skellie
Villegas Family
Mary A. Wellington
Jennifer & Larry Westerman
Joyce Smith Wilson
Susan & Lee Winton
Mary & Warren Zurn

PLAYERS (\$200 - \$299)

Susan & Rick Andre
Barnali Banerjee
Bobbie Banks & David Root
Boyd Beckwith & Jerry Hill
Linda A. Bell
Kathy & Ken Bernhardt
Lydia C. Bottorff
Diane & David Braun
Nancy Bruno
Sean Bryan
Rochelle S. Cohen
Robert Cuellar
Jim & Carol Dew
Genia & Kip Duchon
Paula Forney
Geiger Family Foundation
S.M. Gollmar
Kathleen Gooding
Jacquelin Grater, In Memory of
Nancy Gray
Yvette L. Gunn
Dr. Paul Harris & Amy Harris, In Honor
of Margie & Steve Osheroff
Eric & Jennifer Heller
Shawn Hodge
Dayna Holbel
The Hyde Family
John & Tammy Irion
Joyce E. Jelks
Melissa Kadzik
Melinda Katz
Arlene Langer
Deborah Lewis
Valerie & Terry Love
Brandy Maddox
Jane Mashburn
Max & Maryann McFarlin
Sharon & Gene McClure
Pamela Meredith
Jennifer & Joe Moyers
Jared Mullikin & Ann Marie Purr
Marjorie & Steve Osheroff
Thomas Painter & Maria C. Roncoli
Sarah & Richard Patterson
John & Joni Per-Lee
Dr. Lawrence & Carol Phillips
David Pinson & Edith Waller
Jill Pryor
Lisa Ramey & John Saunders
Melissa Sims
Helen M. Regan
Deb & Michael Robinson
Edwin & Louise Rothberg
Lynne Ruff
Alice Rysdon
Erin & Martin San Cristobal
J'Qoya Sanders
Susan & Neil Sandler
Homer & Peggy Saunders
Carran Schneider
Kasie Slay
Yvonne Selby
Roy & Bonnie Sobelson
Joe Vella
Simmie & Noeouda Walker
Ken & Joan Weil
Kelly Yoakam

FAMILY (\$100 - \$199)

Anonymous (2)
Ali & Aisha Abdur-Rahman
Diana M. Aleman
Barb Alaska-Parr
Bruce & Martha Aron
Irene C. Aronin
Ruth Arwood & Robert Platt
Jill Daugherty & David Babcock
Eugene Bales & Boon Boonyapat
Michael & Lynn Beach
Linda Bell
Charles Bernath & Jeanne Pais
Rick & Melissa Bernhardt
Julie & Dan Binney
Keith A. Bolden
Margaret Bolden
Roslyn Evans Boyer
Claudia Brasfield
Pam Bruce & Edward Gibson
Cary Burgess
Robin Chalmers & Michael Purser
Shirley Cherry
Peggy & Tony Clarke
Wendy Cobb
The Cohen Family
Allison Colbs & Michael Rekhelman
Carol Colwell
Carolyn C. Conner & Pat Craft
Marian & Bill Cooper
Sylvia Cotton
Exa E. Covington
Barbara W. Dale
Phil Davis
Sal & Susan DePasquale
Jane Diamond & Tommy Peterson
Jillian R. Diamond
Kim Dixon
Jeffrey Donnell & Susan Liebeskind
William Dorsey
Sonal R. Doshi
J. David Dunagan & Katherine Geier
Eric & Karin Dusenbury
Edward & Melissa Espy
Elizabeth Ettl
Barry Etra & Janice Wolf
Elizabeth Finnerty
Patricia & Fred Fisher
Shan Franklin
Steve & Peggy Freedman
Karen Freund
Susan Glatt & Marc Greenberg
Jessica Godfrey
Ken P. Goldstein
Carlos Greene
David Griscavage
Alan H. Halpern
Kathy & Randy Harber
Rashidah Hasan
Paul Herd
Carol Hovey
Audrey A. Howlette
Margaret Huber
Raylynn Hughes
In Memory of Karl Schnittke
Tom & Pam Jablonski
Mary & Bob James
Amy Jarratt
David Johnson & Jennifer Graham-Johnson
Brian Jones
Winslow Jones
Sharon & Richard Kaplan
Judy & Don Kaye
Susan Keller
Dennis R. Kemp & Lua R. Blankenship
Fred Kempner & Paula Moore
Roy Kerfoot, Jr.
James C. Kieffer
Toshi Kil
Lori Kimsey
Beverly Korfin & Andrea Finn
Daniel LaChance

HORIZON STARS ANNUAL FUND CONTRIBUTORS

Melinda Langston
Mary Larkin
David LaWare
Brenda Leder
June Lester & John Hinkle
Brad Lewis
Dierdre Lewis
Janet Love
Joan McCarty
Raymond & Penny McPhee
Maggie Mermin
Catherine G. Mew
Mark Minick & Linda Rocque
Rufus Mitchell
Johanne & Benoit Montreuil
Carol & J. Tom Morgan
Janice Moriarity
Pam & Andy Moye
Stephan Nelson
Dung & Kathy Nguyen
Polly & Lawrence Nodine
Patricia & Timothy O'Brien
Sheila Oliver
Anne Olson
Lenny Pallats
Eddie Palmer
Kathleen Parker
Joyce & Gary Pelphrey
Jill & Eric Pohl
Pamela Pryor
Jay & Nikhila Rao
Brenda Rawls
Dr. Denise Raynor
Jo Ann Regan
Sean D. Reisz
Jennifer & Paul Rota
Bradley & Barbara Rudy
Rebecca L. Safon
Ms. Joan Sanford
Vickie & Wayne Scheer
Robert & Maria Schofer
Andrew M. Sheldon
Fawn Shelton
Martha Shepherd
Suzanne Shull
Seema Shrikhande
Eve F. Shulmister
Laurie O. Smith
Ralph Smith & Susan McWethy
Sandi Still
Esther & Jim Stokes
Linda Strausbaugh
Shane Stucky
Maria Studstill
Georgette Taylor
Floyd Taylor
Peter Temko & Jan Mickler
Tom & Judy Thibadeau
Jeanette & Nat Tieman
Jerome Tobler
Stephanie Van Parys & Robert Cleveland
Richard & Paula Vitaris
Molly O. Wagner
Wendy & Matt Watkins
James Watson
Bruce & Sallie Weddell
Loretta Williams
Margaret & John Willingham
Laurie Wise
David & Sally Wright
Beth Yinger
Suehylla El-Attar Young

Vail Braselton
Dr. Herbert J. Bridgewater & Nolan Greene
Amelia Brown & Steven Mullins
Jack D. Brown
Noellyn Brown
Mary Linda Cangelose
Glenn Clanton
Lois P. Cohen
Edye & Lee Cohen
Sally L. Connally
Barbara G. Cook
Marjorie Cooper
Gwen Cottrell
Nancy Cove
Jo Crabb
Brenda Crayton-Pitches
Elaine Damon
Ripp & Liz Davey
Cara David
Diana Spencer & Gary Davis
Michelle Davis-Watts
Frank & Linda Denham
Sal DePasquale
Snehal Desai
Margery Diamond
Richard & Linda Dicker
Mindy Duryea & Sandy Draper
Nanci Dubin
David Dunlap & Laura Finzi
Antoinette J. Earley & William L. Green
Vernelle Ethridge
Jill E. Farber
Loretta Felts
Sue Fillon
Andrea Finn & Beverly Korfin
Kathryn Firago & Thomas Wellnitz
Marianne Fraulo & Robert Guenther
Jeffrey A. Freeman
Chris S. Frost
Dr. Juarlyn L. Gaiter
Willie D. Gaither
Mary Anne & Bruce Gaunt
Erin Gibbs
Ann Glendinning
Dr. Rajul Y. Gokarn
Trish J. Gorland
Andrea Grater
Branden Grimmett
Heather Groach
Melissa & Timothy Hagan
Laura Halls
Donna Sullivan Harper
Antonio & Marita Harrell
Pat Harris
Leah R. Harrison
Greg Hebel
Bill Heinze
Alice S. Henry
Dianne & Paul Hiltman
Cynthia Hoffer
Judy Horowitz
Angelo Hoyt
Ann Hudson & Suzanne Phillips
Stacy Hyken
Phyllis W. Jacksom
Mary T. Johnson
Zenobia Johnson
Cornelia Jordan
Marjorie Jordan
Rebecca & George Kaffezakis
Terry & Robert Kauffman
Tina Kinser
Melvin Krump
Zahava Kurland
Tommy Lazenby
Kathy Ledford
Denyse Levesque
Ann Mebane Levine
Meg Lewis
Ken Lipscomb & Ginny Davy

Michael & Phyllis Lloyd
Joel Lobel & Debbie Smith
Mariana Lombello
Ellen Lura
Natalie Malin-Davis
Jacqueline Markland
Carol Matysiak
Stephanie & Cam McCaa
Michael McCoy
Kim D. Miles
Henry Myton
Helen Nash
Dr. Tamara Nix
Jennifer & Howard Page
Julia Perkins
Alan Perry
Cindy Pietkiewicz
Karen Pinsker
Vidyashankar Rangasawmy
LaVern Reid
Kathleen & Robert Rieter
Donna & Wayne Robertson
Marjorie Rodgers
Shelley A. Rose
Shannon Sanders
Nancy L. Schultz
Sheila Segal
Stephen Sheahan
Linda Sherbert
Julia Short
Kenna Simmons
Sheryl Sloane
Elizabeth Smith
Nelson Steenland & Martine Delcroix
Ellen Kierr Stein
Phyllis Stone
Jayne Thraen
Paul & Maxine Troop
Claudia Tucker
Carolyn Unger
Regina Verde
Marva Webster
Brian Zondlak

*IN-KIND SPONSOR



LOVE HORIZON? YOU CAN MAKE A GIFT NOW!

**Coming out of the pandemic
is tough.**

We need your support to make sure
Horizon is here for you for the next
year and beyond.

Any gift is meaningful - \$5, \$50, \$500
or \$5,000 - your support makes
a difference!



FRIENDS (\$50 - \$99)

Anonymous (5)
Betsy Abrams & Ricki Soaring Dove
Beth Belmonte
Margi Berbari
David E. Berglund
Tricia & Bob Berrett
Michelle & Doug Blackmon
Denise Bomberger
Harry & Margaret Boone

Now in our 39th season, Horizon Theatre Company is a professional contemporary theatre that connects people, inspires hope, and promotes positive change through the stories of our times.

Horizon brings you exciting area and world premieres of contemporary plays from around the world that are smart, funny, provocative, relevant and hopeful. Plays by today's writers, created by Atlanta's best professional actors, directors and designers in our intimate theatre. Since 1983, Horizon has produced over 190 contemporary plays and reaches over 20,000 patrons every year with an adventurous mix of nationally and internationally acclaimed plays and our own Atlanta stories.

Horizon annually offers a mainstage season of 5-7 contemporary plays for diverse Atlanta audiences and a Family Series for younger audiences. Horizon also develops new audiences and artists through our education and play development programs: the New South Play Festival, the New South Young Playwrights Contest and Festival, Black Women Speak (commissions of new works by Southern Black women playwrights), Horizon In-School Playwriting Workshops, the Horizon Apprentice Company (early career professionals), the Intern Program (for college students) and the high school theatre program at The New School.



KIM'S CONVENIENCE • SUPPORT GROUP FOR MEN • THE HOUSE THAT WILL NOT STAND • ROOTED

COMING THIS HOLIDAY SEASON! YOUR FESTIVE FAVORITES ARE BACK!



In Collaboration with
The Atlanta Children's Theatre Company

MADELINE'S CHRISTMAS

Book & Lyrics by Jennifer Kirkeby
Music by Shirley Mier
Based on the book by Ludwig Bemelmans
Directed by Spring Mason



DEC 2-31, 2023



PRESENTS



Vallmark CHRISTMAS: AN IMPROVISED HOLIDAY "MOVIE" LIVE ONSTAGE Created by Amber Nash and Topher Payne

"WITTY, SASSY,
SEXY!"
-BROADWAY WORLD

DIRECTED &
NARRATED BY
HALLMARK HOLIDAY
MOVIE SCREENWRITER
Topher Payne

DEC 8-31, 2023 @HORIZON